

Meeting:	Safer Bromley Partnership Strategic Group
Date:	19th September 2013
Subject:	Performance Review 2013/2014 (Quarter 1)
Author:	Pratheepan Jeyapragasam, Crime Analyst pratheepan.jeyapragasam@bromley.gov.uk

1 SUMMARY

1.1 This report is presented in order to update the Safer Bromley Partnership on the performance achieved against the targets set in the last year Safer Bromley Partnership Strategic Group 2012/13. The report provides the latest performance monitoring data to 30th June 2013 (Quarter 4).

2 RECOMMENDATION

2.1 The Strategic Group is asked to:

- Note and comment on the performance information contained within the report.

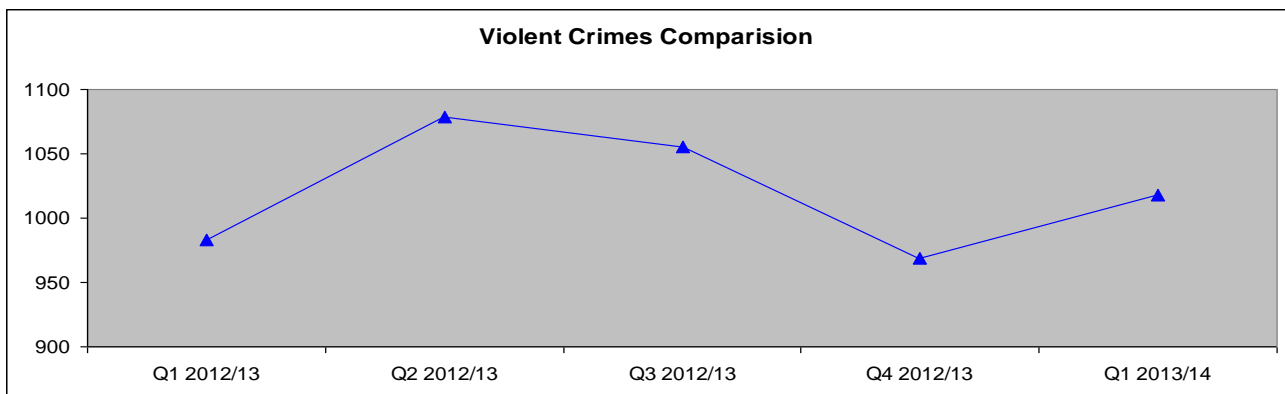
3 BACKGROUND INFORMATION

3.1 This report provides an update of performance at the end of Quarter 1 in the delivery year 2013/2014. The performance picture across the range of Partnership activity continues to be healthy.

3.2 A summary of the “portfolio” of offences and Anti Social Behaviour that are included within these overarching targets is provided at Appendix 1. Reporting on individual crime types and detail of individual operations will only be made as a routine if achievement against set targets is not being made or, in some cases, where the measurable rates of individual offences or types of offending are significantly different from expected trends and predicted patterns etc. The management of these operational level issues will be dealt with outside of the Strategic Group at the combined Police/Partnership Tactical Tasking and Coordination Group chaired by the Borough Police Superintendent.

Performance Indicator 1- Reduction in Numbers of Violent Crimes within Bromley

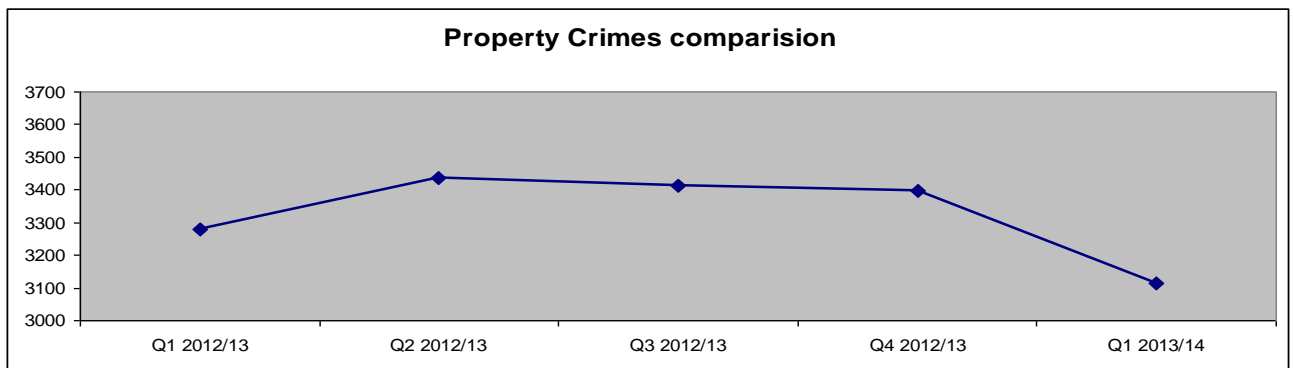
3.3 Offences related to Violent Crimes represent 22% of the Total Notifiable Offences in the period of Quarter 1 this year. The chart overleaf provides more detail.



3.4 During the period April to June 2013 there were 1018 Total Violent Offences reported to the Police. This represented an increase of 35(↑ 4%) offences compared with the same period previous year this includes an increase of 39 Wounding/GBH offences and 17 Other Violence offences.

Performance Indicator 2- Reduction in Numbers of Property Crimes within Bromley

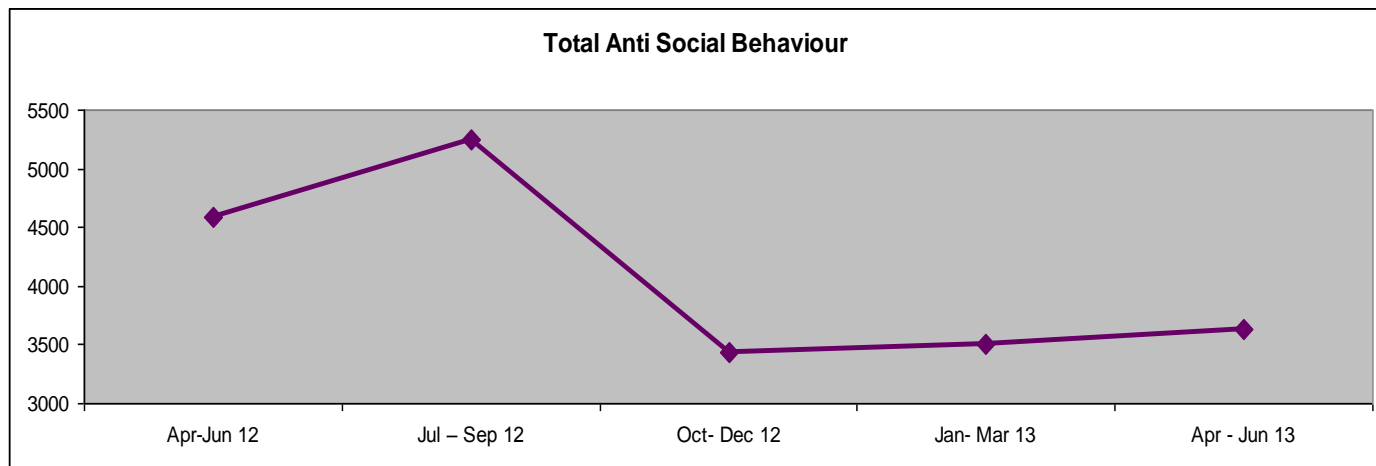
3.5 Total offences to property Crimes represent 67% of the Total Notifiable Offences in the period of Quarter 1 this year.



3.6 During the April to June 2013 period of there were 3115 Total Property related Offences reported to the Police, this represented a reduction of 166 (↓5%) offences compared with the same period previous year.

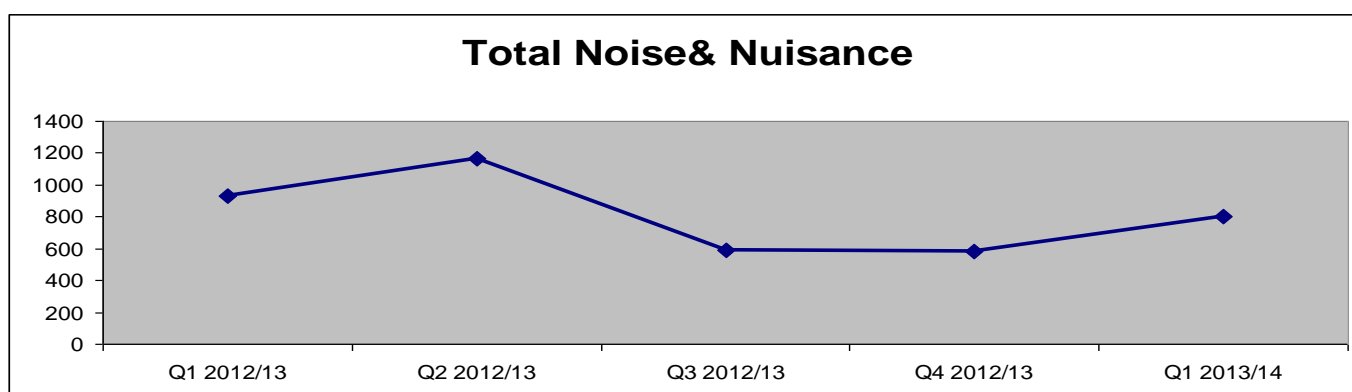
3.7 During this reporting period, the Borough had experienced 697 Burglaries, 116 Robberies, 1797 Theft & Handling and 505 Criminal Damages. Whilst the reduction in levels of overall property crime are positive, it should be noted that, compared with the same period in the previous year, Burglaries were decreased by 16% (137 offences). In relation to Robberies, and Criminal Damage, all these offences are decreased. They were decreased by 8% (10 offences) and 5% (29 offences) respectively but there were 1% (10 offences) increased identified in relation to Theft & Handling.

Performance Indicator 3 Reduction in Levels of Recorded Anti Social Behaviour

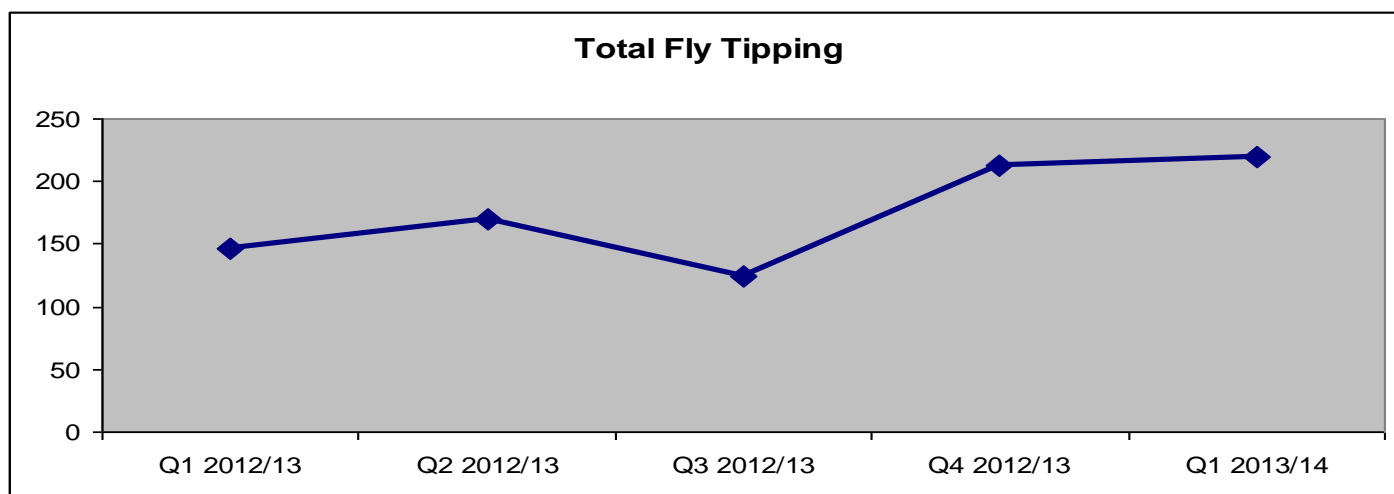


	Apr- Jun 12	Jul – Sep 12	Oct- Dec 12	Jan- Mar 13	Apr- Jun 13
Noise & Nuisance	931	1162	589	579	801
Graffiti	1108	787	530	539	404
Fly Tipping Investigation	146	170	124	213	201
ASB to Council	108	126	81	85	83
ASB to Police	2291	2999	2116	2084	2139
Total ASB	4584	5244	3440	3500	3628

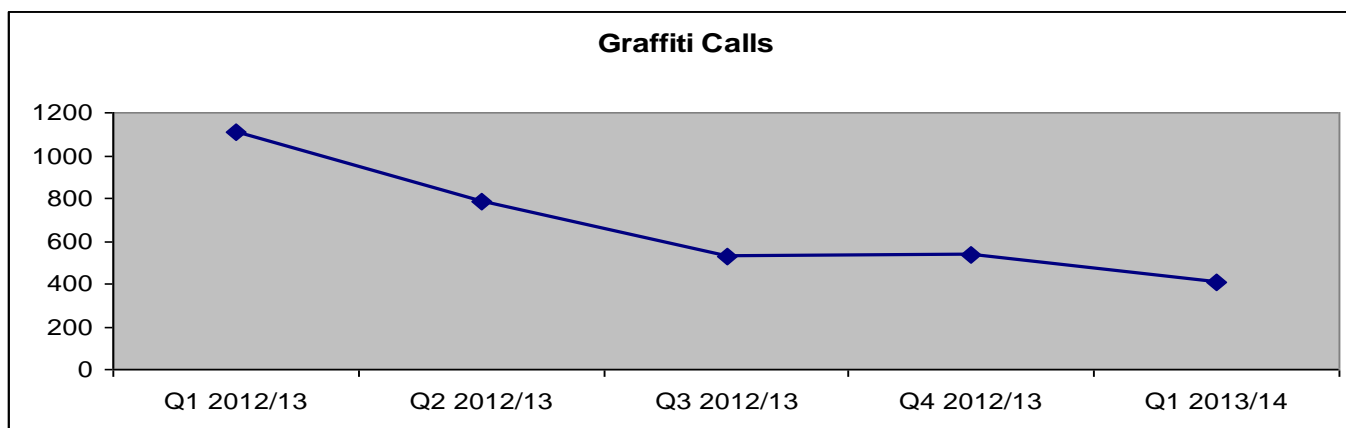
3.8 During the reporting period, the Borough has experienced a reduction of 956 (21%) incidents of ASB reported when compared with the same period last year.



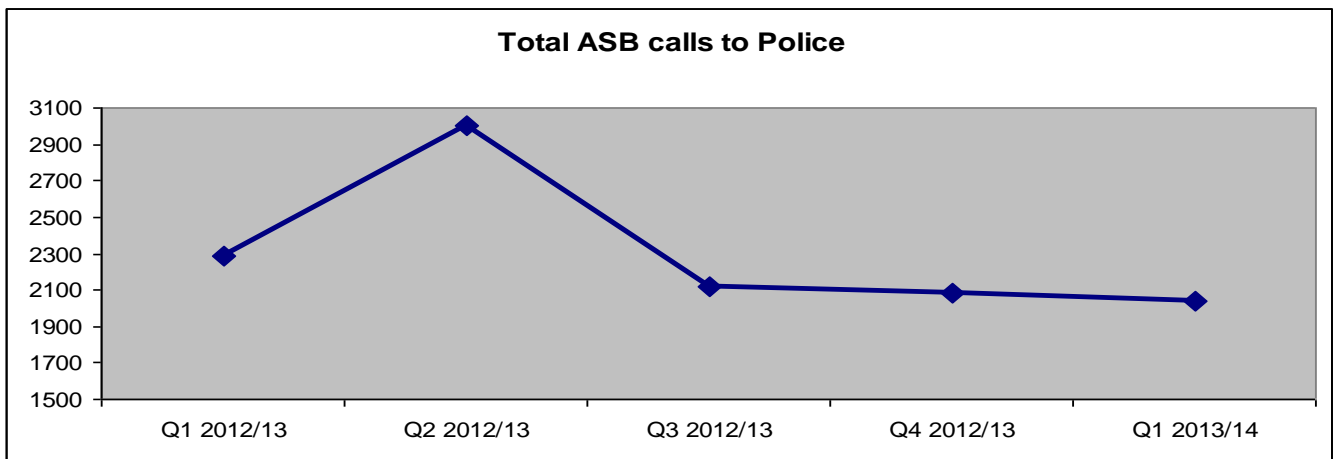
3.9 As can be seen from the figure above, during the reporting period (April - June 2013), the Borough has experienced a reduction of 130 (14%) incidents of Noise and Nuisance ASB reported when compared with the same period last year.



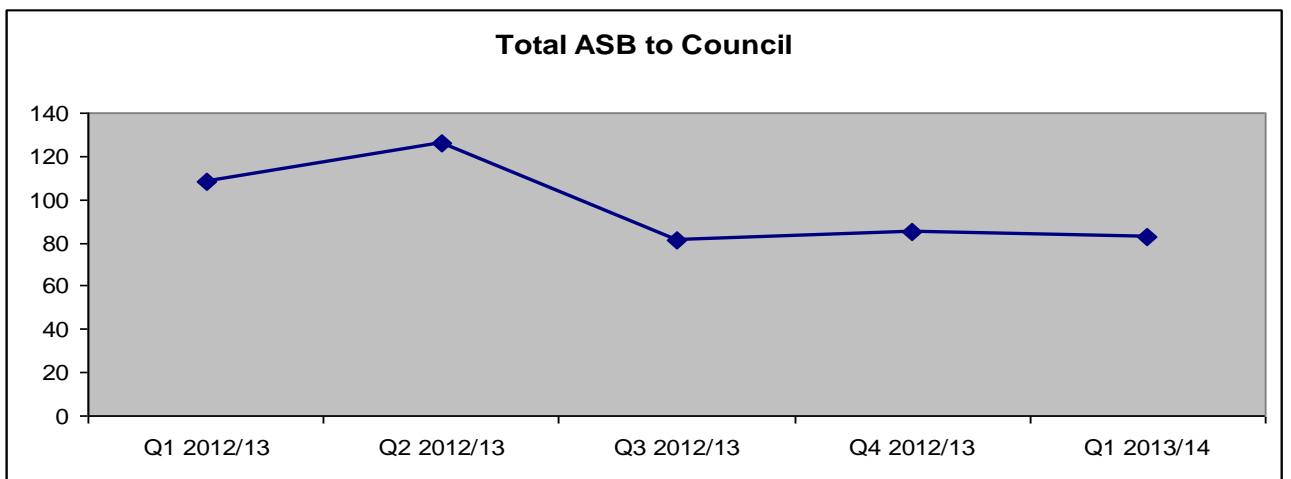
3.10 As can be seen from the figure above, during the reporting period, the Borough has experienced an increase of 74 incidents of Fly Tipping ASB reported when compared with the same period last year.



3.11 As can be seen from the figure above, during the reporting period, the Borough has experienced a reduction of 704 incidents of Graffiti ASB reported when compared with the same period last year.



3.12 During this reporting period it is noted that there was a reduction of 152 incidents reported to police regarding ASB compared with the same period last year.



3.13 During April to June 2013 the Borough has experienced a reduction of 25 incidents of ASB reported when compared with the same period last year.

Performance Indicator 4 Increased Confidence in the Fact that Bromley is a Safe Place

3.14 In April to June data has not been published by Met Police for this performance indicator.

APPENDIX 1

Performance Indicator Portfolios:

Violence Portfolio	
Offences	Supporting Measures
Violence with Injury	Domestic Violence
Common Assault	Domestic Violence Sanction Detection Rate
Harassment	Domestic Violence Arrest Rate
Threats/ Conspiracy to Kill	Serious Youth Violence
Blackmail	Knife Enabled Crime
Kidnapping/ False Imprisonment	Knife Enabled Crime Sanctioned Det. Rate
	Gun Crime
	Gun Crime Sanctioned Det. Rate
	Most Serious Violence
	Most Serious Violence Sanctioned Det. Rate

Property Portfolio
Offences:
Personal Robbery
Commercial Robbery
Total Robbery
Residential Burglary
Non-Residential Burglary
Theft/Taking Motor Vehicles
Theft From Motor Vehicles
Theft From Shops
Theft From Person
Theft of Pedal Cycles
Other Theft
Criminal Damage

Anti Social Behaviour Portfolio
ASB:
Noise & Nuisance
ASB to Council
Fly Tipping
ASB to Police
Graffiti